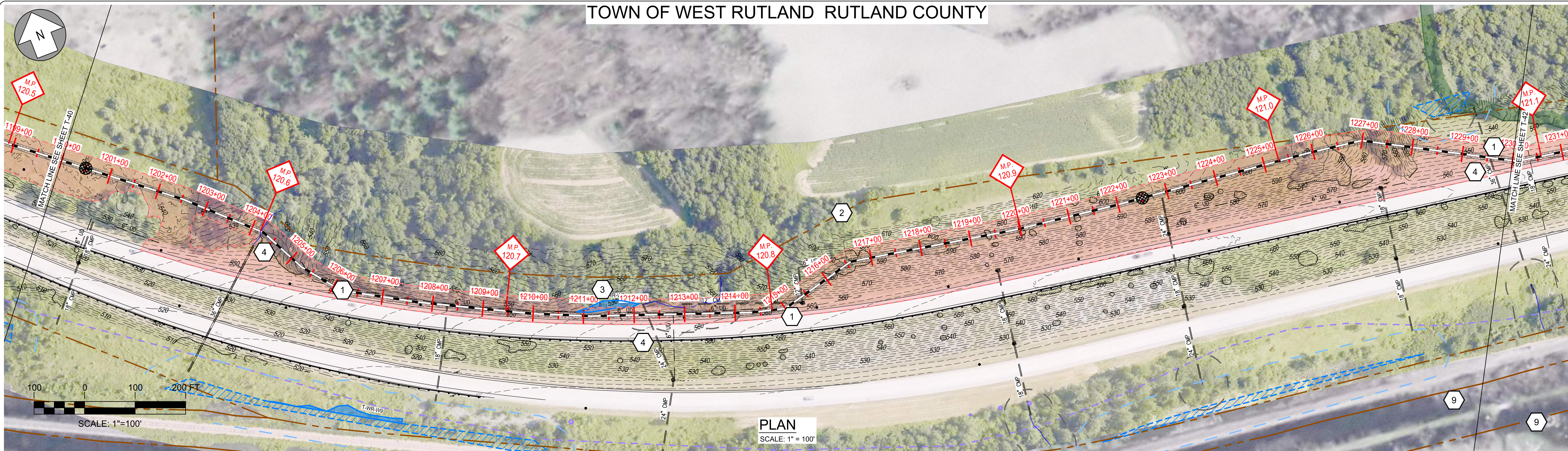
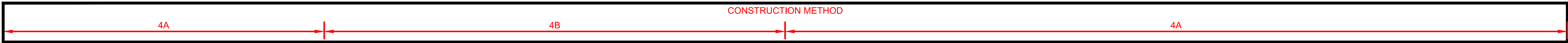


TOWN OF WEST RUTLAND RUTLAND COUNTY

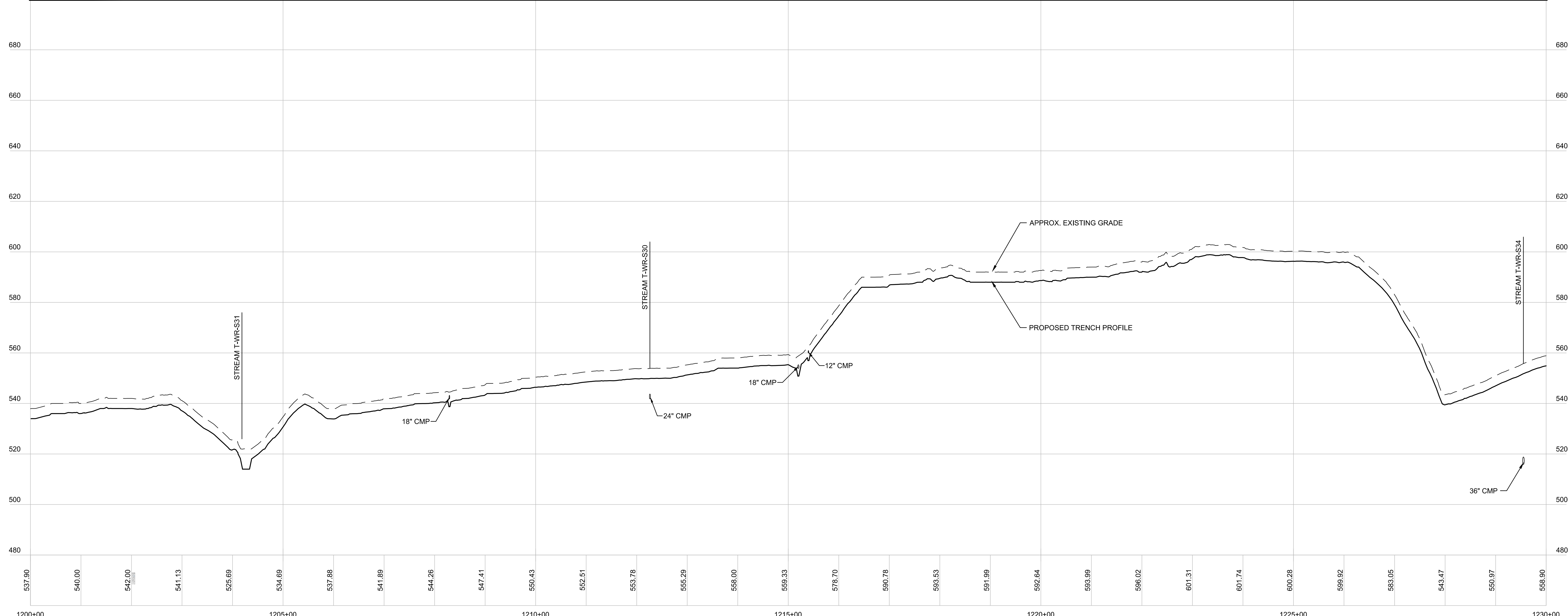


EPSC WORK NOTES

- 1 INSTALL STABILIZED CONSTRUCTION ENTRANCE. SEE TYPICAL DETAIL ON SHEET TD-7.
- 2 DEMARCATÉ LIMIT OF DISTURBANCE AND INSTALL PERIMETER CONTROLS IN ACCORDANCE WITH GENERAL EPSC NOTES AND CONSTRUCTION METHOD TYPICAL DETAILS ON SHEETS G-5 AND CM-1 THRU CM-5.
- 3 WETLAND CROSSING. SEE "TYPICAL WETLAND CONSTRUCTION" ON SHEET TD-7.
- 4 OPEN TRENCH EXCAVATION OR AT-CULVERT STREAM CROSSING TO BE COMPLETED IN ACCORDANCE WITH TYPICAL DETAILS ON SHEETS TD-4 AND TD-5.
- 5 REPLACE STREAM CULVERT IN ACCORDANCE WITH TYPICAL DETAILS ON SHEETS TD-3 AND TD-4.
- 6 DEMARCATÉ AND AVOID POTENTIAL ROOSTING TREE.
- 7 DEMARCATÉ AND AVOID RTE POPULATION.
- 8 IMPLEMENT RTE PLANT PROTECTION PLAN.
- 9 IMPLEMENT RTE ANIMAL PROTECTION PLAN.



REFER TO SHEETS CM-1 THROUGH CM-5 FOR CONSTRUCTION METHOD DETAILS.

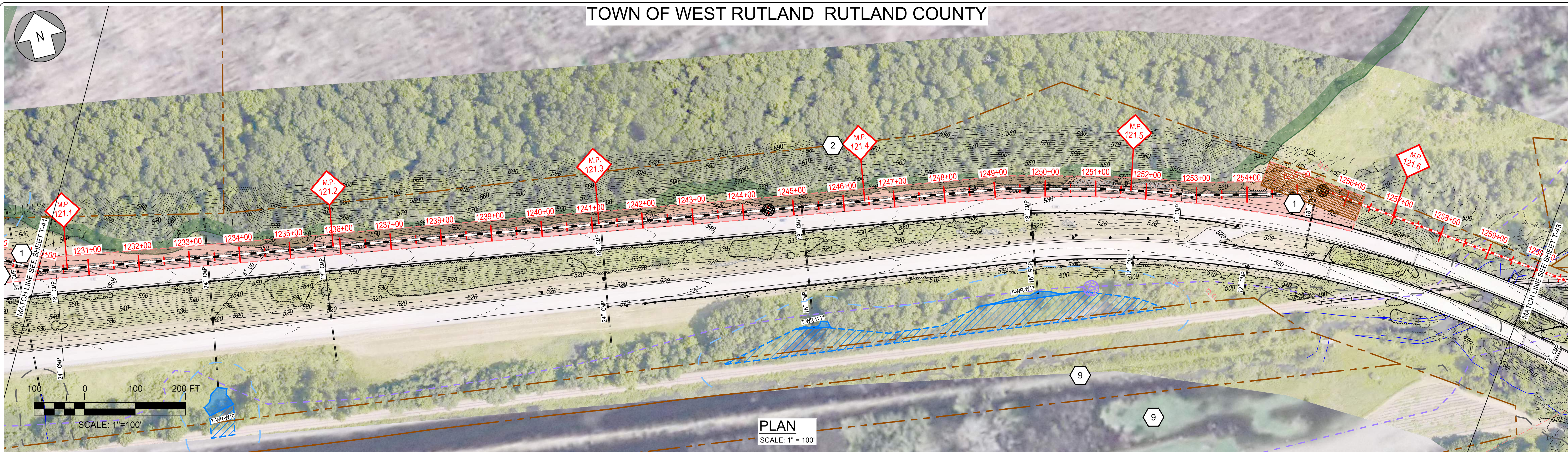


Designed	.
Drawn	.
Checked	.
Approved	.
Scale	AS NOTED

No.	Revision	Date	By	Ck	PE	PE #
A	20% ANR Submission	12/5/14	TRC	AMW		
B	EPSC & PERMITS IFCR	3/8/15	TRC	AMW		
C	ISSUED FOR USE	3/27/15	TRC	AMW		

TDI New England
NEW ENGLAND CLEAN POWER LINK
Plan & Profile - Overland Route
T-41
Prepared by: **OTRC** 9/19/14

TOWN OF WEST RUTLAND RUTLAND COUNTY



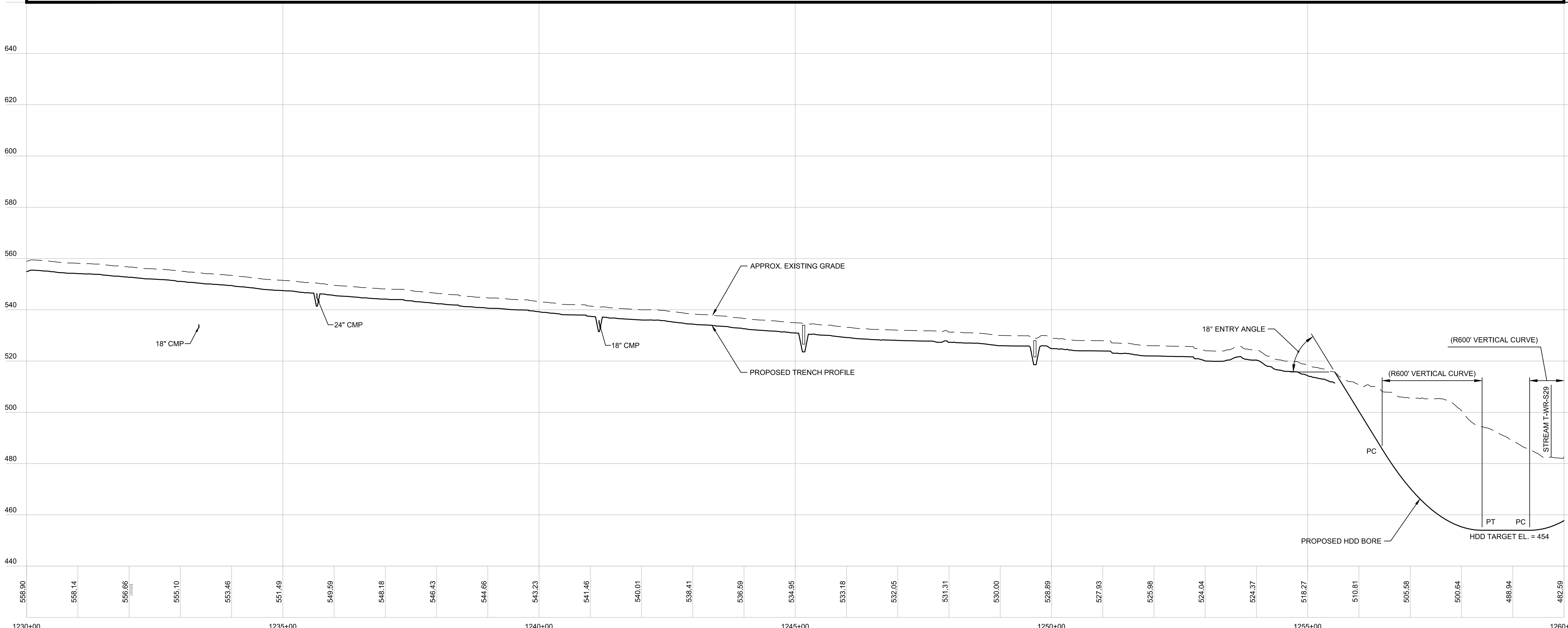
EPSC WORK NOTES

- 1 INSTALL STABILIZED CONSTRUCTION ENTRANCE. SEE TYPICAL DETAIL ON SHEET TD-7.
- 2 DEMARCATATE LIMIT OF DISTURBANCE AND INSTALL PERIMETER CONTROLS IN ACCORDANCE WITH GENERAL EPSC NOTES AND CONSTRUCTION METHOD TYPICAL DETAILS ON SHEETS G-5 AND CM-1 THRU CM-5.
- 3 WETLAND CROSSING. SEE "TYPICAL WETLAND CONSTRUCTION" ON SHEET TD-7.
- 4 OPEN TRENCH EXCAVATION OR AT-CULVERT STREAM CROSSING TO BE COMPLETED IN ACCORDANCE WITH TYPICAL DETAILS ON SHEETS TD-4 AND TD-5.
- 5 REPLACE STREAM CULVERT IN ACCORDANCE WITH TYPICAL DETAILS ON SHEETS TD-3 AND TD-4.
- 6 DEMARCATATE AND AVOID POTENTIAL ROOSTING TREE.
- 7 DEMARCATATE AND AVOID RTE POPULATION.
- 8 IMPLEMENT RTE PLANT PROTECTION PLAN.
- 9 IMPLEMENT RTE ANIMAL PROTECTION PLAN.

PLAN
SCALE: 1" = 100'



REFER TO SHEETS CM-1 THROUGH CM-5 FOR CONSTRUCTION METHOD DETAILS.



PROFILE
SCALE: HORIZ: 1" = 100'
VERT: 1" = 20'

Designed	.
Drawn	.
Checked	.
Approved	.
Scale	AS NOTED

No.	Revision	Date	By	Ck	PE	PE #
A	20% ANR Submission	12/5/14	TRC	AMW		
B	EPSC & PERMITS IFCR	3/8/15	TRC	AMW		
C	ISSUED FOR USE	3/27/15	TRC	AMW		

NEW ENGLAND CLEAN POWER LINK

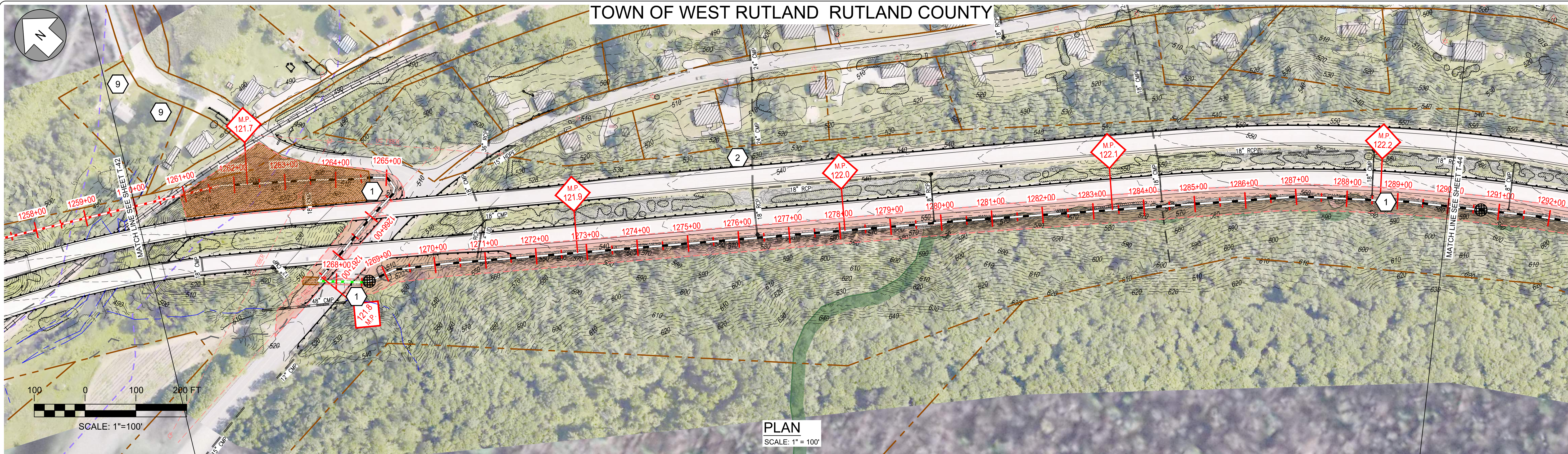
 TDI New England

 Plan & Profile - Overland Route

 T-42

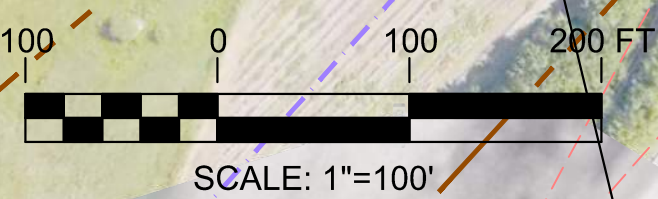
 Prepared by: 9/19/14

TOWN OF WEST RUTLAND RUTLAND COUNTY



EPSC WORK NOTES

- 1 INSTALL STABILIZED CONSTRUCTION ENTRANCE. SEE TYPICAL DETAIL ON SHEET TD-7.
- 2 DEMARCATÉ LIMIT OF DISTURBANCE AND INSTALL PERIMETER CONTROLS IN ACCORDANCE WITH GENERAL EPSC NOTES AND CONSTRUCTION METHOD TYPICAL DETAILS ON SHEETS G-5 AND CM-1 THRU CM-5.
- 3 WETLAND CROSSING. SEE "TYPICAL WETLAND CONSTRUCTION" ON SHEET TD-7.
- 4 OPEN TRENCH EXCAVATION OR AT-CULVERT STREAM CROSSING TO BE COMPLETED IN ACCORDANCE WITH TYPICAL DETAILS ON SHEETS TD-4 AND TD-5.
- 5 REPLACE STREAM CULVERT IN ACCORDANCE WITH TYPICAL DETAILS ON SHEETS TD-3 AND TD-4.
- 6 DEMARCATÉ AND AVOID POTENTIAL ROOSTING TREE.
- 7 DEMARCATÉ AND AVOID RTE POPULATION.
- 8 IMPLEMENT RTE PLANT PROTECTION PLAN.
- 9 IMPLEMENT RTE ANIMAL PROTECTION PLAN.

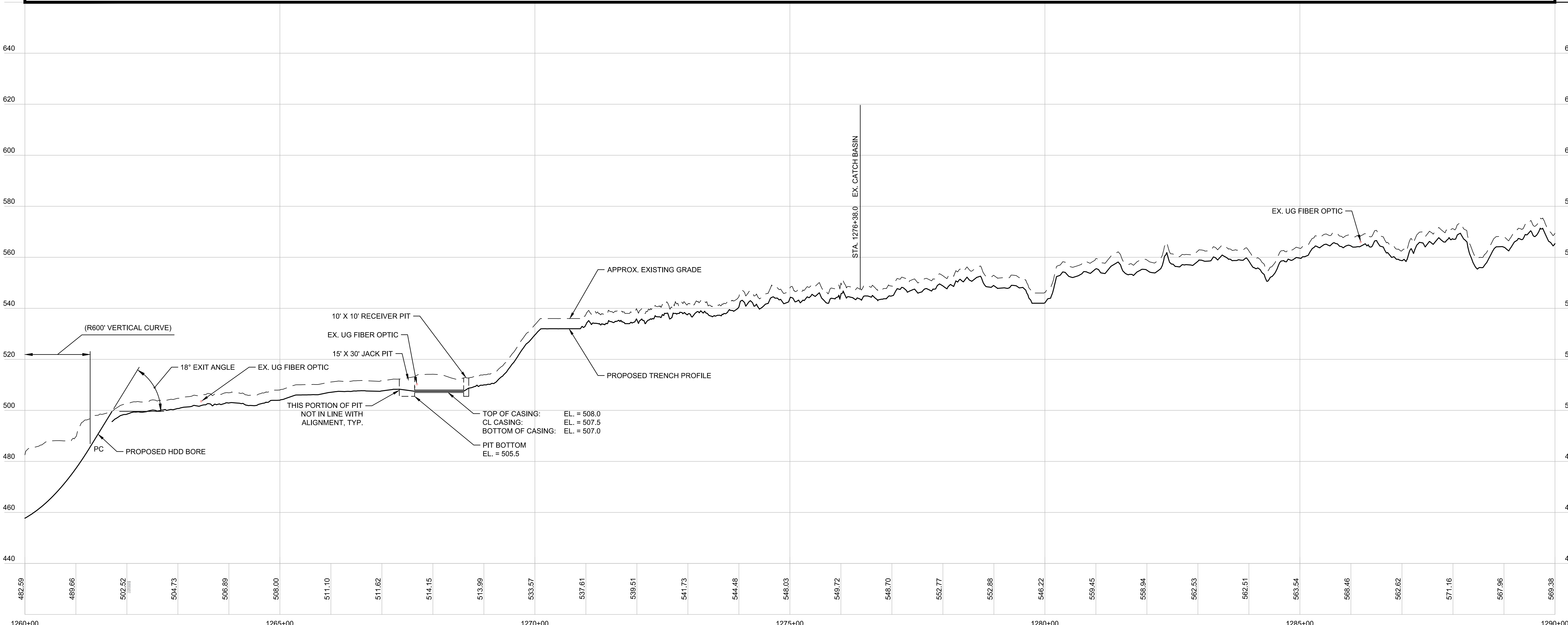


PLAN
SCALE: 1" = 100'

CONSTRUCTION METHOD



REFER TO SHEETS CM-1 THROUGH CM-5 FOR CONSTRUCTION METHOD DETAILS.



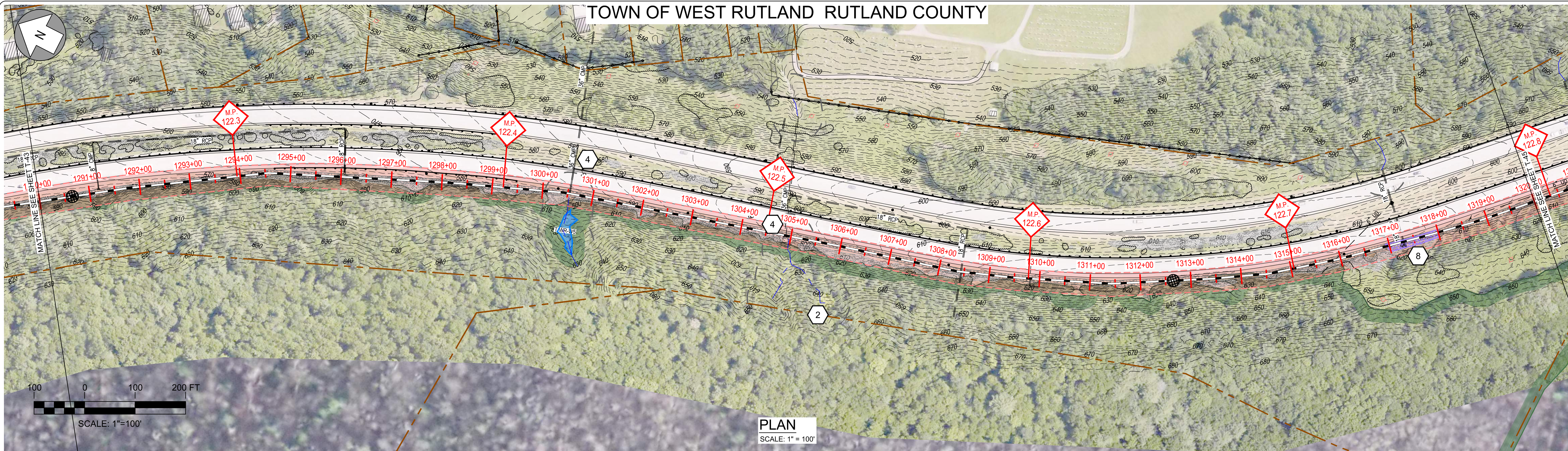
PROFILE
SCALE: HORIZ: 1" = 100'
VERT: 1" = 20'

Designed	.
Drawn	.
Checked	.
Approved	.
Scale	AS NOTED

No.	Revision	Date	By	Ck	PE	PE #
A	20% ANR Submission	12/5/14	TRC	AMW		
B	EPSC & PERMITS IFCR	3/8/15	TRC	AMW		
C	ISSUED FOR USE	3/27/15	TRC	AMW		

TDI New England
NEW ENGLAND CLEAN POWER LINK
Plan & Profile - Overland Route
T-43
Prepared by: 9/19/14

TOWN OF WEST RUTLAND RUTLAND COUNTY



EPSC WORK NOTES

- 1 INSTALL STABILIZED CONSTRUCTION ENTRANCE. SEE TYPICAL DETAIL ON SHEET TD-7.
- 2 DEMARCATÉ LIMIT OF DISTURBANCE AND INSTALL PERIMETER CONTROLS IN ACCORDANCE WITH GENERAL EPSC NOTES AND CONSTRUCTION METHOD TYPICAL DETAILS ON SHEETS G-5 AND CM-1 THRU CM-5.
- 3 WETLAND CROSSING. SEE "TYPICAL WETLAND CONSTRUCTION" ON SHEET TD-7.
- 4 OPEN TRENCH EXCAVATION OR AT-CULVERT STREAM CROSSING TO BE COMPLETED IN ACCORDANCE WITH TYPICAL DETAILS ON SHEETS TD-4 AND TD-5.
- 5 REPLACE STREAM CULVERT IN ACCORDANCE WITH TYPICAL DETAILS ON SHEETS TD-3 AND TD-4.
- 6 DEMARCATÉ AND AVOID POTENTIAL ROOSTING TREE.
- 7 DEMARCATÉ AND AVOID RTE POPULATION.
- 8 IMPLEMENT RTE PLANT PROTECTION PLAN.
- 9 IMPLEMENT RTE ANIMAL PROTECTION PLAN.

100 0 100 200 FT

SCALE: 1"=100'

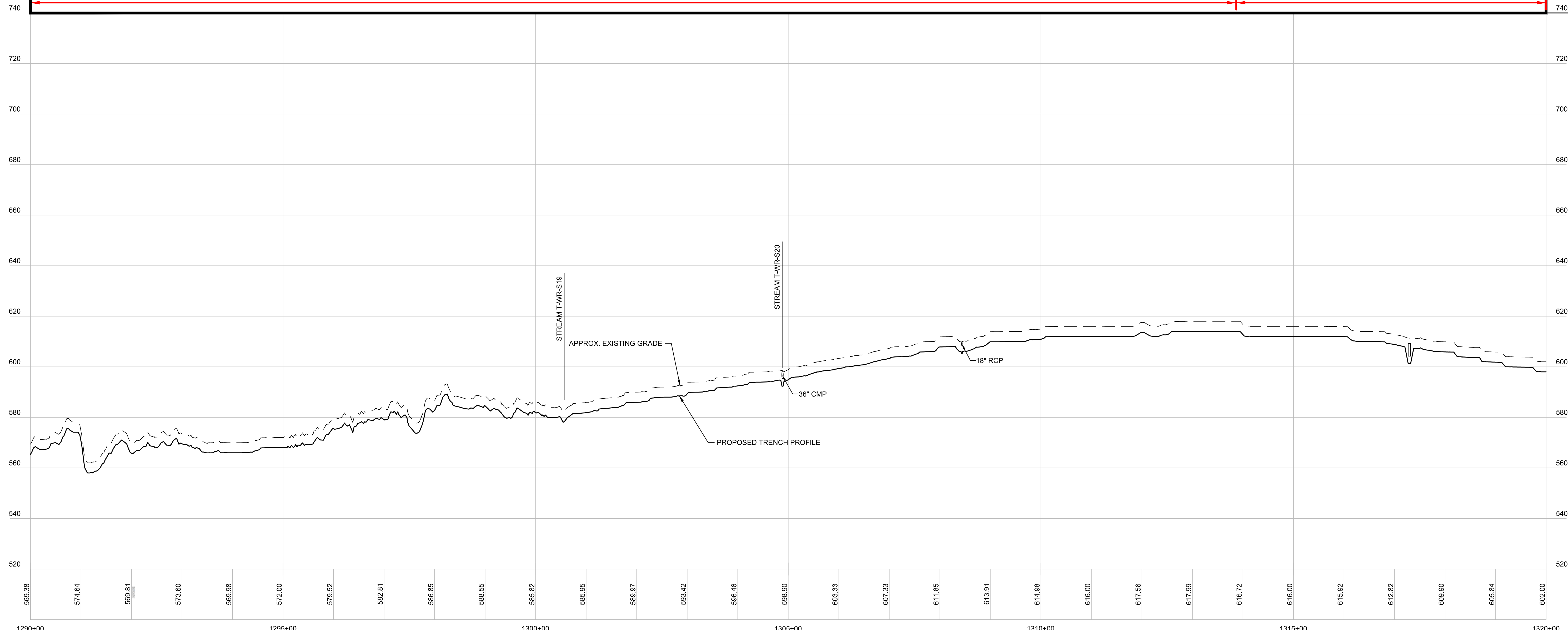
PLAN
SCALE: 1" = 100'

CONSTRUCTION METHOD

4D

4A

REFER TO SHEETS CM-1 THROUGH CM-5 FOR CONSTRUCTION METHOD DETAILS.





PROFILE

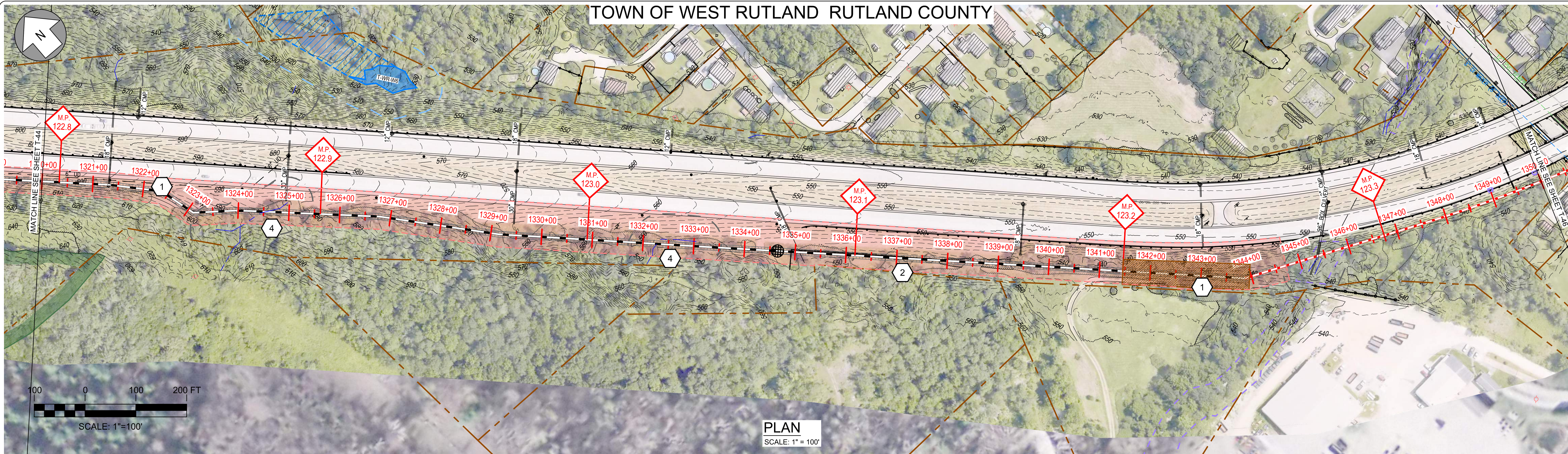
SCALE: HORIZ: 1" = 100'
VERT: 1" = 20'

Designed	.
Drawn	.
Checked	.
Approved	.
Scale	AS NOTED

No.	Revision	Date	By	Ck	PE	PE #
A	20% ANR Submission	12/5/14	TRC	AMW		
B	EPSC & PERMITS IFCR	3/8/15	TRC	AMW		
C	ISSUED FOR USE	3/27/15	TRC	AMW		

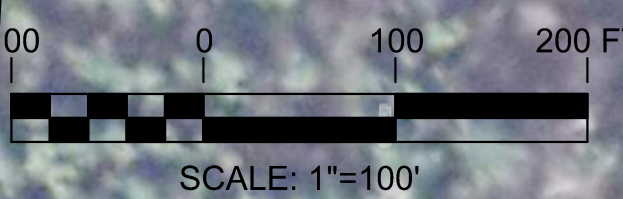

NEW ENGLAND CLEAN POWER LINK
 TDI New England
 Plan & Profile - Overland Route
 T-44
 Prepared by:  9/19/14

TOWN OF WEST RUTLAND RUTLAND COUNTY



EPSC WORK NOTES

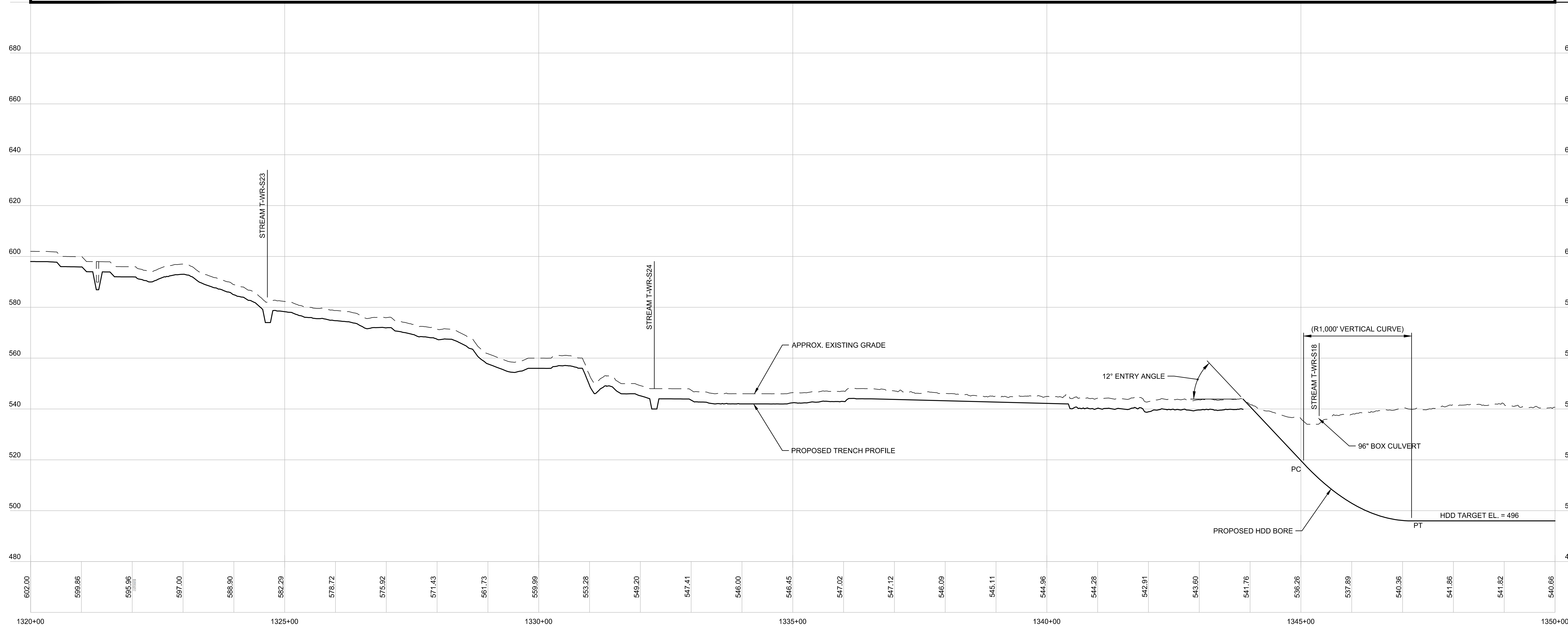
- 1 INSTALL STABILIZED CONSTRUCTION ENTRANCE. SEE TYPICAL DETAIL ON SHEET TD-7.
- 2 DEMARCATO LIMIT OF DISTURBANCE AND INSTALL PERIMETER CONTROLS IN ACCORDANCE WITH GENERAL EPSC NOTES AND CONSTRUCTION METHOD TYPICAL DETAILS ON SHEETS G-5 AND CM-1 THRU CM-5.
- 3 WETLAND CROSSING. SEE "TYPICAL WETLAND CONSTRUCTION" ON SHEET TD-7.
- 4 OPEN TRENCH EXCAVATION OR AT-CULVERT STREAM CROSSING TO BE COMPLETED IN ACCORDANCE WITH TYPICAL DETAILS ON SHEETS TD-4 AND TD-5.
- 5 REPLACE STREAM CULVERT IN ACCORDANCE WITH TYPICAL DETAILS ON SHEETS TD-3 AND TD-4.
- 6 DEMARCATO AND AVOID POTENTIAL ROOSTING TREE.
- 7 DEMARCATO AND AVOID RTE POPULATION.
- 8 IMPLEMENT RTE PLANT PROTECTION PLAN.
- 9 IMPLEMENT RTE ANIMAL PROTECTION PLAN.



PLAN
SCALE: 1" = 100'



REFER TO SHEETS CM-1 THROUGH CM-5 FOR CONSTRUCTION METHOD DETAILS.



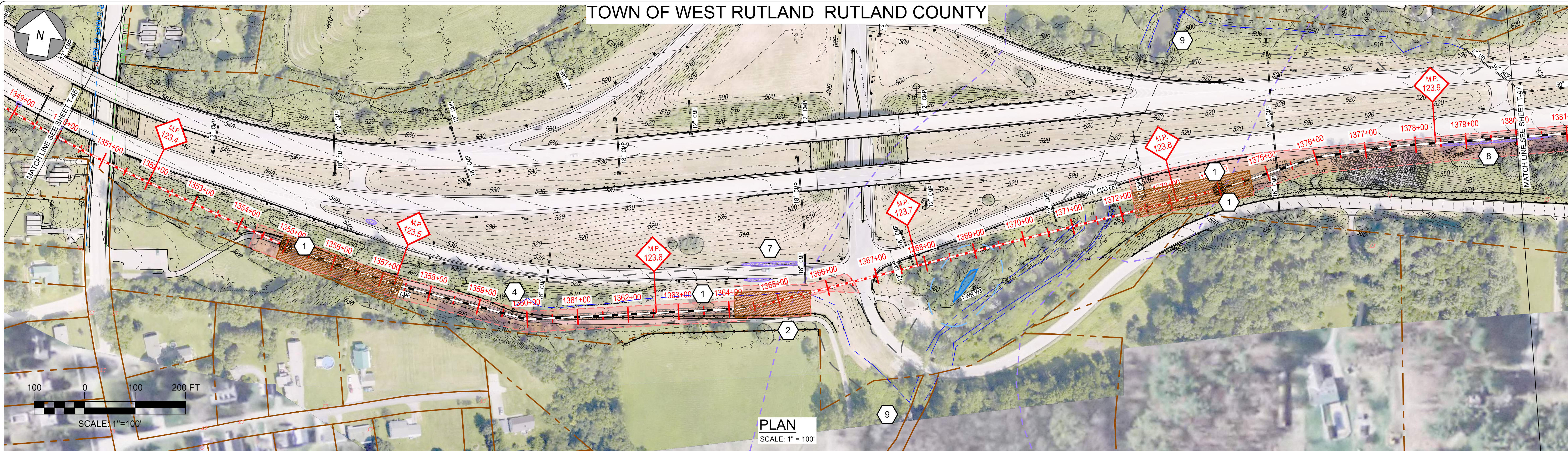
PROFILE
SCALE: HORIZ: 1" = 100'
VERT: 1" = 20'

Designed	.
Drawn	.
Checked	.
Approved	.
Scale	AS NOTED

No.	Revision	Date	By	Ck	PE	PE #
A	20% ANR Submission	12/5/14	TRC	AMW		
B	EPSC & PERMITS IFCR	3/8/15	TRC	AMW		
C	ISSUED FOR USE	3/27/15	TRC	AMW		


NEW ENGLAND CLEAN POWER LINK
 TDI New England
 Plan & Profile - Overland Route
 T-45
 Prepared by:  9/19/14

TOWN OF WEST RUTLAND RUTLAND COUNTY



EPSC WORK NOTES

- 1 INSTALL STABILIZED CONSTRUCTION ENTRANCE. SEE TYPICAL DETAIL ON SHEET TD-7.
- 2 DEMARCATÉ LIMIT OF DISTURBANCE AND INSTALL PERIMETER CONTROLS IN ACCORDANCE WITH GENERAL EPSC NOTES AND CONSTRUCTION METHOD TYPICAL DETAILS ON SHEETS G-5 AND CM-1 THRU CM-5.
- 3 WETLAND CROSSING. SEE "TYPICAL WETLAND CONSTRUCTION" ON SHEET TD-7.
- 4 OPEN TRENCH EXCAVATION OR AT-CULVERT STREAM CROSSING TO BE COMPLETED IN ACCORDANCE WITH TYPICAL DETAILS ON SHEETS TD-4 AND TD-5.
- 5 REPLACE STREAM CULVERT IN ACCORDANCE WITH TYPICAL DETAILS ON SHEETS TD-3 AND TD-4.
- 6 DEMARCATÉ AND AVOID POTENTIAL ROOSTING TREE.
- 7 DEMARCATÉ AND AVOID RTE POPULATION.
- 8 IMPLEMENT RTE PLANT PROTECTION PLAN.
- 9 IMPLEMENT RTE ANIMAL PROTECTION PLAN.





REFER TO SHEETS CM-1 THROUGH CM-5 FOR CONSTRUCTION METHOD DETAILS.

PROFILE

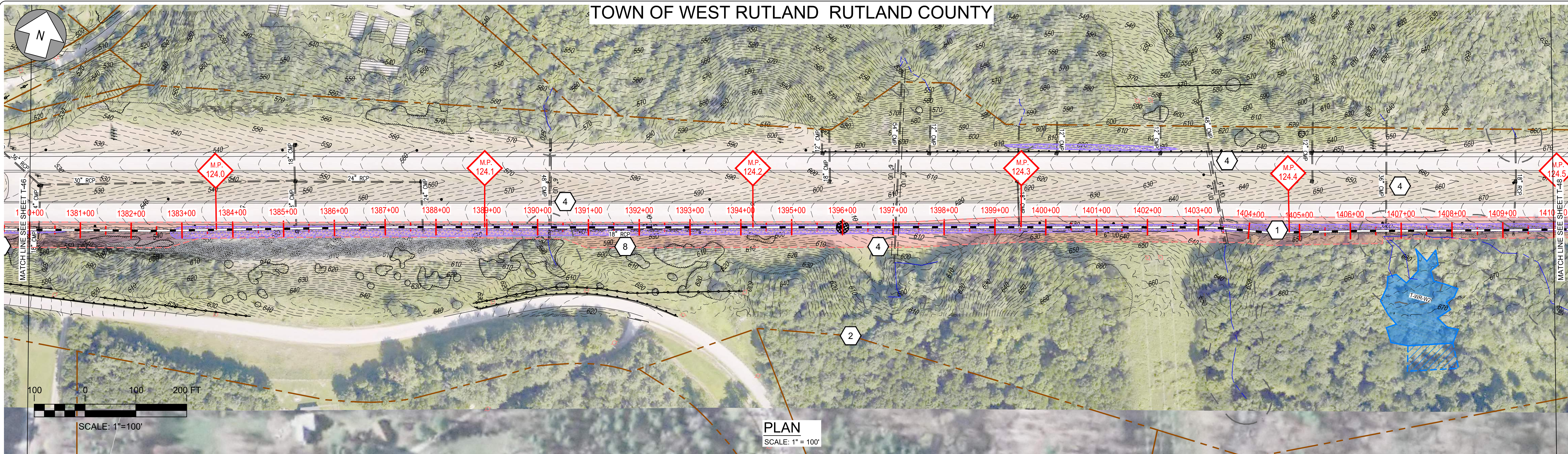
SCALE: HORIZ: 1" = 100'
VERT: 1" = 20'

Designed	.
Drawn	.
Checked	.
Approved	.
Scale	AS NOTED

No.	Revision	Date	By	Ck	PE	PE #
A	20% ANR Submission	12/5/14	TRC	AMW		
B	EPSC & PERMITS IFCR	3/8/15	TRC	AMW		
C	ISSUED FOR USE	3/27/15	TRC	AMW		


NEW ENGLAND CLEAN POWER LINK
 TDI New England
 Plan & Profile - Overland Route
 T-46
 Prepared by:  9/19/14

TOWN OF WEST RUTLAND RUTLAND COUNTY



EPSC WORK NOTES

- 1 INSTALL STABILIZED CONSTRUCTION ENTRANCE. SEE TYPICAL DETAIL ON SHEET TD-7.
- 2 DEMARCATÉ LIMIT OF DISTURBANCE AND INSTALL PERIMETER CONTROLS IN ACCORDANCE WITH GENERAL EPSC NOTES AND CONSTRUCTION METHOD TYPICAL DETAILS ON SHEETS G-5 AND CM-1 THRU CM-5.
- 3 WETLAND CROSSING. SEE "TYPICAL WETLAND CONSTRUCTION" ON SHEET TD-7.
- 4 OPEN TRENCH EXCAVATION OR AT-CULVERT STREAM CROSSING TO BE COMPLETED IN ACCORDANCE WITH TYPICAL DETAILS ON SHEETS TD-4 AND TD-5.
- 5 REPLACE STREAM CULVERT IN ACCORDANCE WITH TYPICAL DETAILS ON SHEETS TD-3 AND TD-4.
- 6 DEMARCATÉ AND AVOID POTENTIAL ROOSTING TREE.
- 7 DEMARCATÉ AND AVOID RTE POPULATION.
- 8 IMPLEMENT RTE PLANT PROTECTION PLAN.
- 9 IMPLEMENT RTE ANIMAL PROTECTION PLAN.



REFER TO SHEETS CM-1 THROUGH CM-5 FOR CONSTRUCTION METHOD DETAILS.

PROFILE

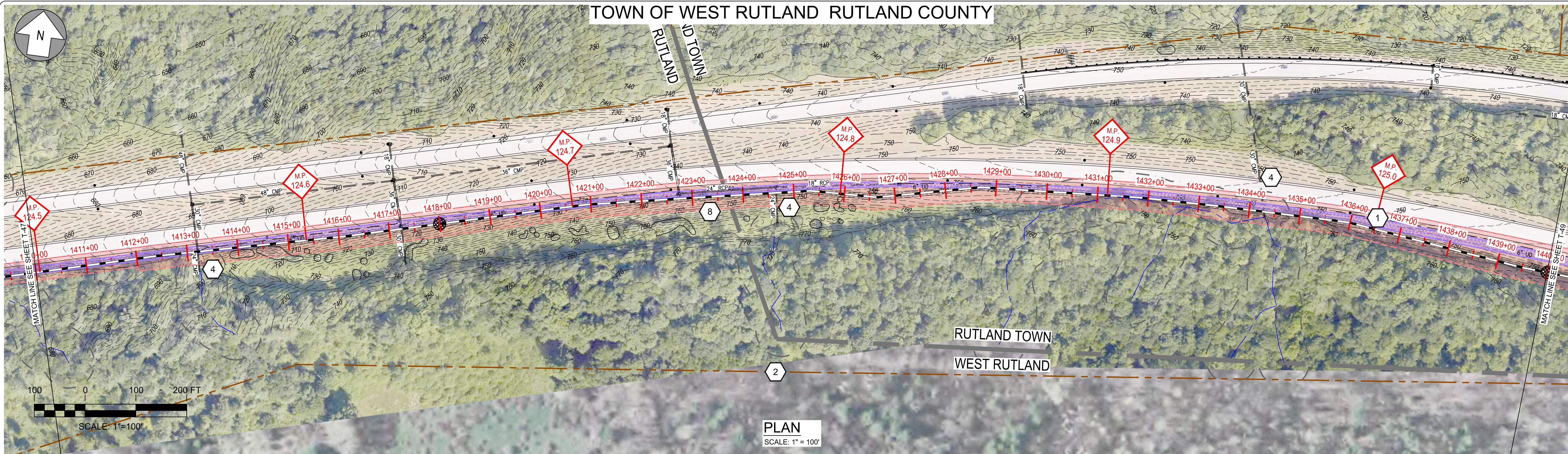
SCALE: HORIZ: 1" = 100'
VERT: 1" = 20'

Designed	.
Drawn	.
Checked	.
Approved	.
Scale	AS NOTED

No.	Revision	Date	By	Ck	PE	PE #
A	20% ANR Submission	12/5/14	TRC	AMW		
B	EPSC & PERMITS IFCR	3/9/15	TRC	AMW		
C	ISSUED FOR USE	3/27/15	TRC	AMW		


NEW ENGLAND CLEAN POWER LINK
 TDI New England
 Plan & Profile - Overland Route
 T-47
 Prepared by:  9/19/14

TOWN OF WEST RUTLAND RUTLAND COUNTY

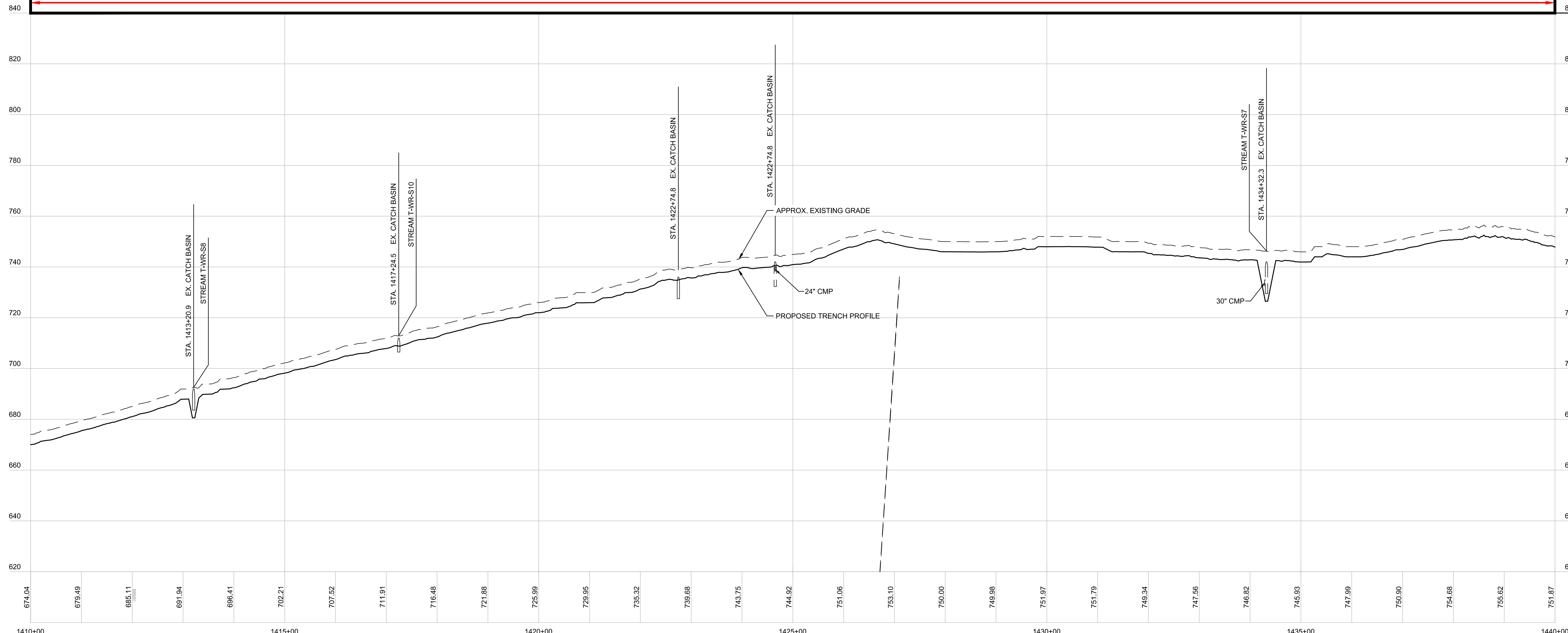


EPSC WORK NOTES

- 1 INSTALL STABILIZED CONSTRUCTION ENTRANCE. SEE TYPICAL DETAIL ON SHEET TD-7.
- 2 DEMARCATÉ LIMIT OF DISTURBANCE AND INSTALL PERIMETER CONTROLS IN ACCORDANCE WITH GENERAL EPSC NOTES AND CONSTRUCTION METHOD TYPICAL DETAILS ON SHEETS G-5 AND CM-1 THRU CM-5.
- 3 WETLAND CROSSING. SEE "TYPICAL WETLAND CONSTRUCTION" ON SHEET TD-7.
- 4 OPEN TRENCH EXCAVATION OR AT-CULVERT STREAM CROSSING TO BE COMPLETED IN ACCORDANCE WITH TYPICAL DETAILS ON SHEETS TD-4 AND TD-5.
- 5 REPLACE STREAM CULVERT IN ACCORDANCE WITH TYPICAL DETAILS ON SHEETS TD-3 AND TD-4.
- 6 DEMARCATÉ AND AVOID POTENTIAL ROOSTING TREE.
- 7 DEMARCATÉ AND AVOID RTE POPULATION.
- 8 IMPLEMENT RTE PLANT PROTECTION PLAN.
- 9 IMPLEMENT RTE ANIMAL PROTECTION PLAN.

CONSTRUCTION METHOD
4D

REFER TO SHEETS CM-1 THROUGH CM-5 FOR CONSTRUCTION METHOD DETAILS.



PROFILE
SCALE: HORIZ: 1" = 100'
VERT: 1" = 20'

Designed	.
Drawn	.
Checked	.
Approved	.
Scale	AS NOTED

No.	Revision	Date	By	Ck	PE	PE #
A	20% ANR Submission	12/5/14	TRC	AMW		
B	EPSC & PERMITS IFCR	3/8/15	TRC	AMW		
C	ISSUED FOR USE	3/27/15	TRC	AMW		

NEW ENGLAND CLEAN POWER LINK

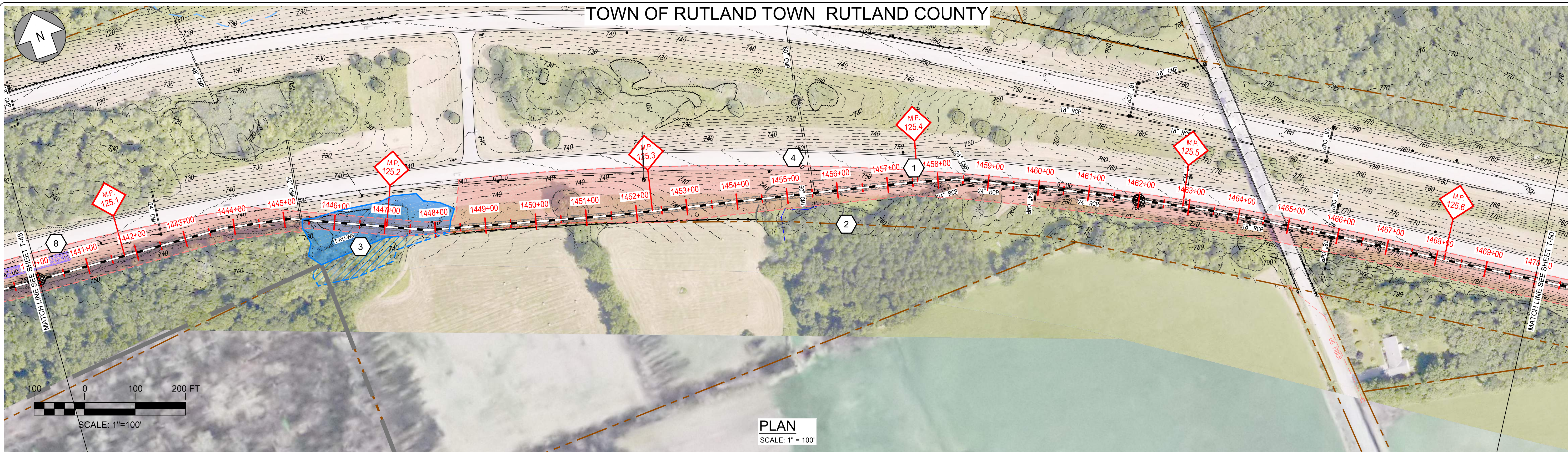
 TDI New England

 Plan & Profile - Overland Route

 T-48

 Prepared by: 9/19/14

TOWN OF RUTLAND TOWN RUTLAND COUNTY

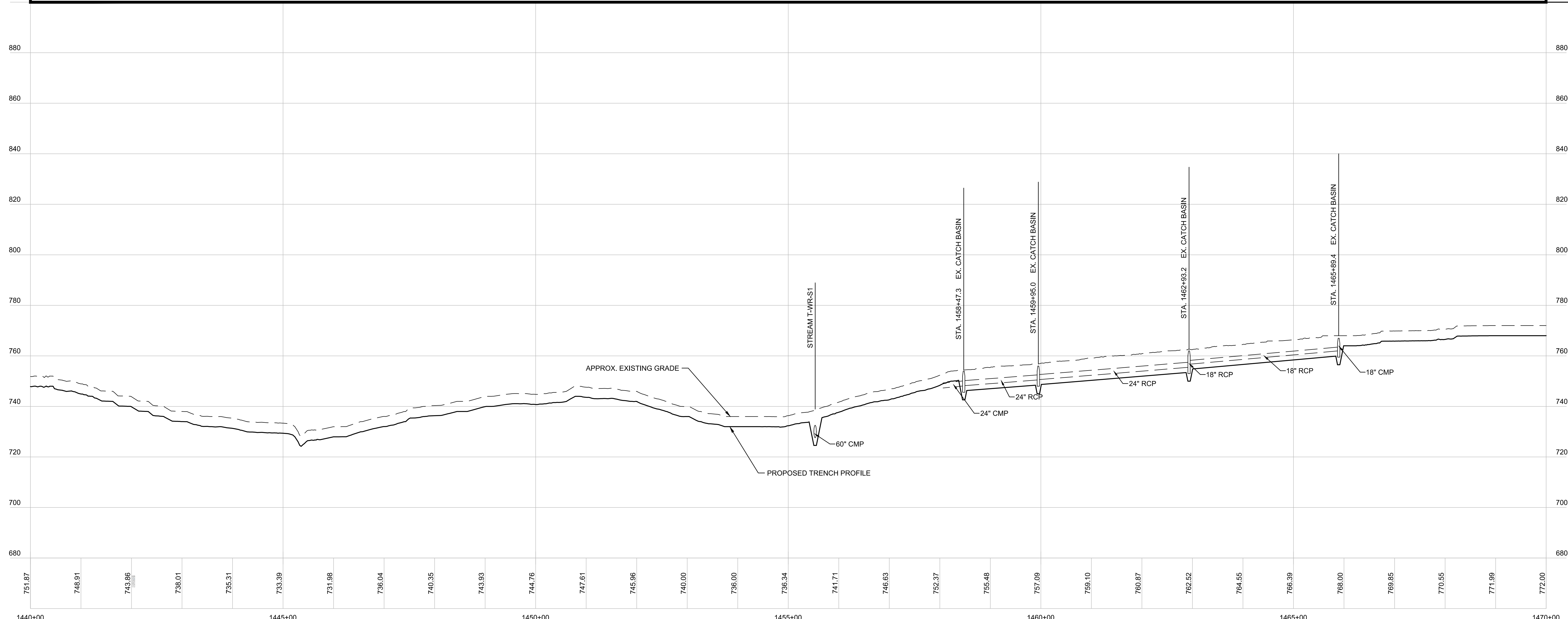


EPSC WORK NOTES

- 1 INSTALL STABILIZED CONSTRUCTION ENTRANCE. SEE TYPICAL DETAIL ON SHEET TD-7.
- 2 DEMARCATÉ LIMIT OF DISTURBANCE AND INSTALL PERIMETER CONTROLS IN ACCORDANCE WITH GENERAL EPSC NOTES AND CONSTRUCTION METHOD TYPICAL DETAILS ON SHEETS G-5 AND CM-1 THRU CM-5.
- 3 WETLAND CROSSING. SEE "TYPICAL WETLAND CONSTRUCTION" ON SHEET TD-7.
- 4 OPEN TRENCH EXCAVATION OR AT-CULVERT STREAM CROSSING TO BE COMPLETED IN ACCORDANCE WITH TYPICAL DETAILS ON SHEETS TD-4 AND TD-5.
- 5 REPLACE STREAM CULVERT IN ACCORDANCE WITH TYPICAL DETAILS ON SHEETS TD-3 AND TD-4.
- 6 DEMARCATÉ AND AVOID POTENTIAL ROOSTING TREE.
- 7 DEMARCATÉ AND AVOID RTE POPULATION.
- 8 IMPLEMENT RTE PLANT PROTECTION PLAN.
- 9 IMPLEMENT RTE ANIMAL PROTECTION PLAN.



REFER TO SHEETS CM-1 THROUGH CM-5 FOR CONSTRUCTION METHOD DETAILS.

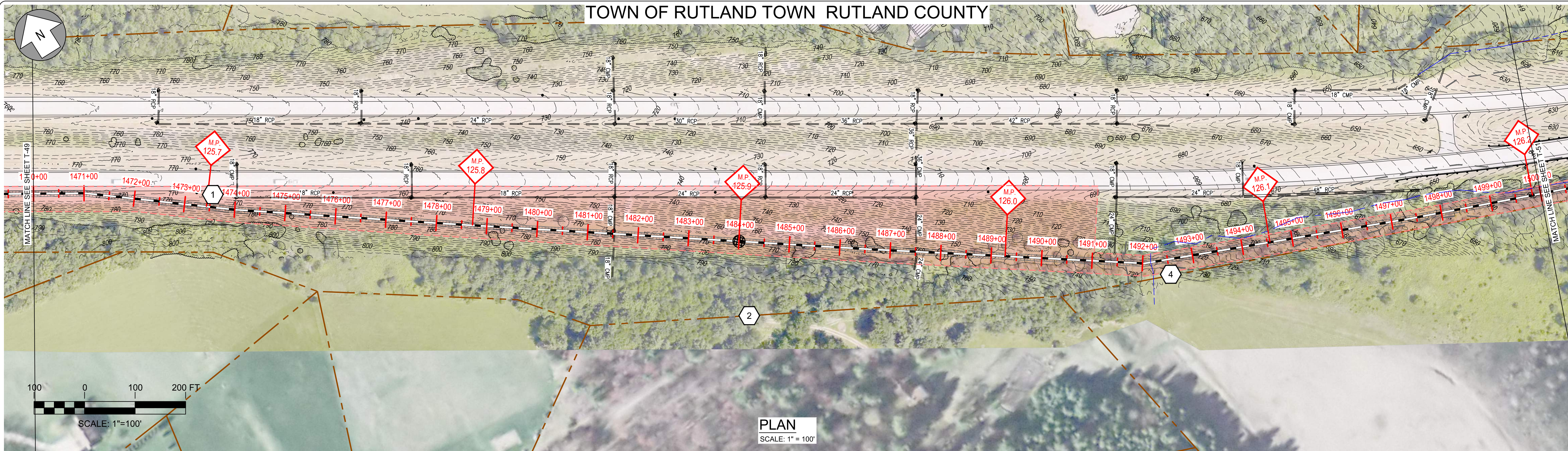


Designed	.
Drawn	.
Checked	.
Approved	.
Scale	AS NOTED

No.	Revision	Date	By	Ck	PE	PE #
A	20% ANR Submission	12/5/14	TRC	AMW		
B	EPSC & PERMITS IFCR	3/8/15	TRC	AMW		
C	ISSUED FOR USE	3/27/15	TRC	AMW		

TDI New England
NEW ENGLAND CLEAN POWER LINK
Plan & Profile - Overland Route
T-49
Prepared by: **OTRC** 9/19/14

TOWN OF RUTLAND TOWN RUTLAND COUNTY



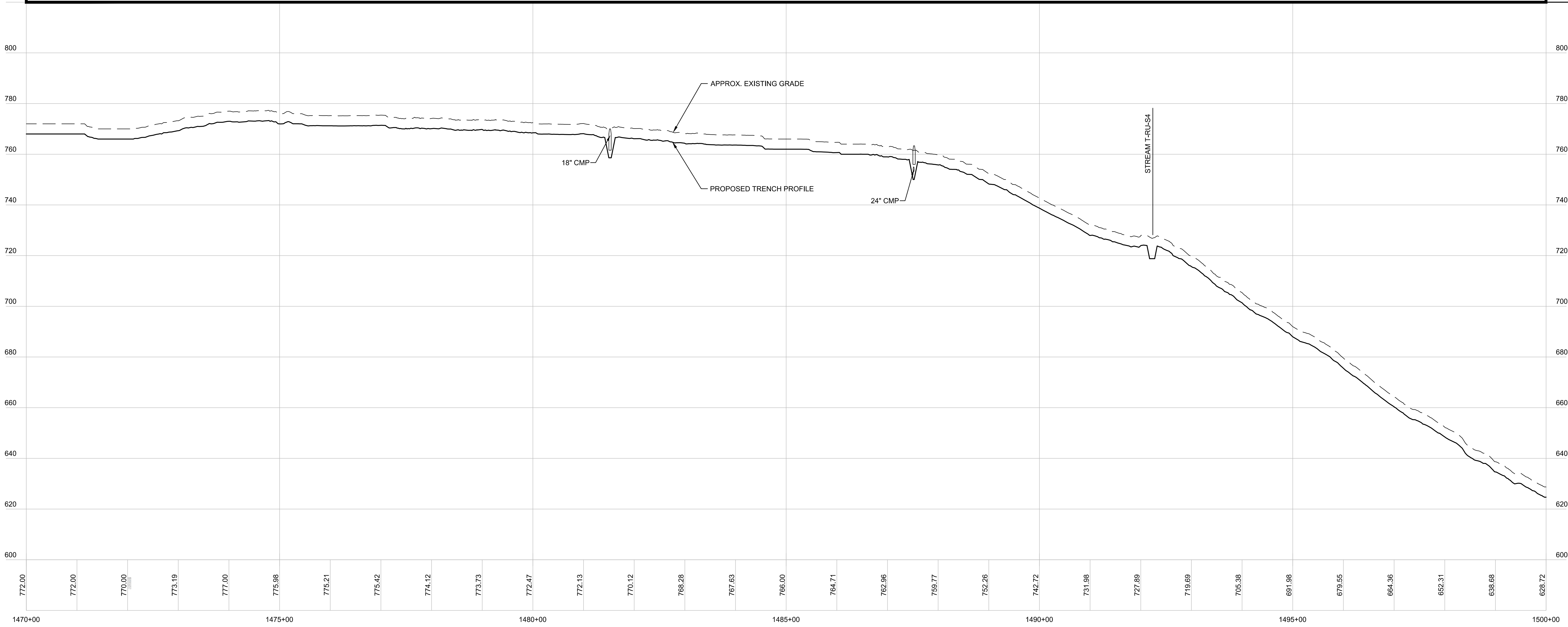
EPSC WORK NOTES

- 1 INSTALL STABILIZED CONSTRUCTION ENTRANCE. SEE TYPICAL DETAIL ON SHEET TD-7.
- 2 DEMARCATÉ LIMIT OF DISTURBANCE AND INSTALL PERIMETER CONTROLS IN ACCORDANCE WITH GENERAL EPSC NOTES AND CONSTRUCTION METHOD TYPICAL DETAILS ON SHEETS G-5 AND CM-1 THRU CM-5.
- 3 WETLAND CROSSING. SEE "TYPICAL WETLAND CONSTRUCTION" ON SHEET TD-7.
- 4 OPEN TRENCH EXCAVATION OR AT-CULVERT STREAM CROSSING TO BE COMPLETED IN ACCORDANCE WITH TYPICAL DETAILS ON SHEETS TD-4 AND TD-5.
- 5 REPLACE STREAM CULVERT IN ACCORDANCE WITH TYPICAL DETAILS ON SHEETS TD-3 AND TD-4.
- 6 DEMARCATÉ AND AVOID POTENTIAL ROOSTING TREE.
- 7 DEMARCATÉ AND AVOID RTE POPULATION.
- 8 IMPLEMENT RTE PLANT PROTECTION PLAN.
- 9 IMPLEMENT RTE ANIMAL PROTECTION PLAN.

PLAN
SCALE: 1" = 100'



REFER TO SHEETS CM-1 THROUGH CM-5 FOR CONSTRUCTION METHOD DETAILS.



PROFILE
SCALE: HORIZ: 1" = 100'
VERT: 1" = 20'

Designed	.
Drawn	.
Checked	.
Approved	.
Scale	AS NOTED

No.	Revision	Date	By	Ck	PE	PE #
A	20% ANR Submission	12/5/14	TRC	AMW		
B	EPSC & PERMITS IFCR	3/8/15	TRC	AMW		
C	ISSUED FOR USE	3/27/15	TRC	AMW		

NEW ENGLAND CLEAN POWER LINK

 TDI New England

 Plan & Profile - Overland Route

 T-50

 Prepared by: 9/19/14